

# PEGATRON Private 5G Introduction

2025

Rev.01



Timothy Lee,  
Ph.D. CFA MBA

## Current Role

Pegatron (5G Business)  
❖ 부사장 – Wireless Convergence



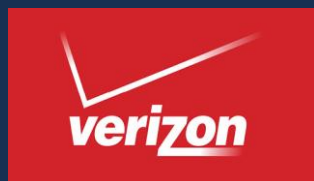
중남미 엑셀러레이터  
❖ 센터장



한국원자력대학원 (산자부)  
❖ 해외사업 연구자문



## Prior Experience



(미국 통신분야 #1)  
기획실 M&A  
무선통신 재무담당



(글로벌 #1 자산운용)  
뉴욕 지사  
텔레콤 애널리스트



(글로벌 4대 패션부분 대학)  
뉴욕주립대 송도캠퍼스 설립  
Chief Operating Officer



(5G 통신장비사)  
M&A 전략  
Executive Vice President

# Company Introduction

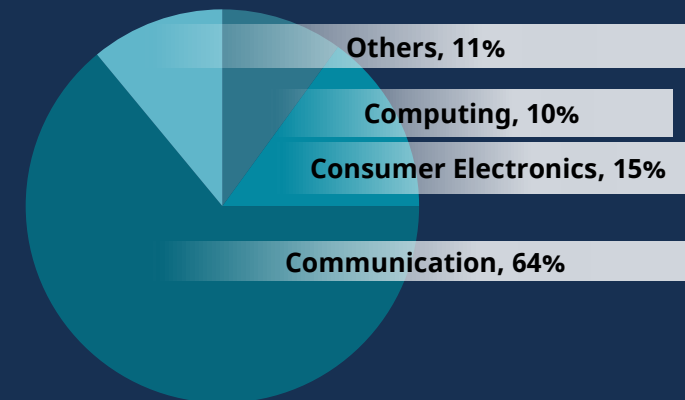
A trusted provider of electronic manufacturing services.  
Offers a wide range of products and solutions to business worldwide.

Established on  
**June. 27<sup>th</sup>**  
**2007**

Headquarters  
**Taipei,**  
**Taiwan**

2023 Consolidated Revenue  
**USD \$**  
**40.3 Bn**

2023 Revenue Breakdown by Main Product Segment



Global  
Operation Sites  
**24**

Total Number of  
Employees  
**~100,000**

2024 Fortune  
Global 500  
**No. 375**



# Company Introduction – Global Operations

## Global Operations



Sales Center  
  Design Center  
  Service Center  
  Manufacturing Center

**TW** ■ ■ ■ Taipei  
■ Xindian  
■ Taoyuan  
■ Hsinchu  
■ Taichung

**CN** ■ ■ ■ ■ Suzhou  
■ ■ ■ ■ Shanghai  
■ ■ ■ ■ Chongqing

**JP** ■ Tokyo  
**KR** ■ Seoul  
**VN** ■ Hai Phong  
**IN** ■ Chengalpattu  
**SG** ■ Singapore

**ID** ■ Batam  
**AU** ■ Sydney  
**CZ** ■ ■ Ostrava  
**US** ■ San Jose  
■ Jeffersonville  
**MX** ■ Juarez

# Company Introduction – Major Product Categories

## Computing

- Notebook PC
- Desktop PC
- Motherboard
- AI Server & Cloud Computing
- Edge Computing

## Artificial Intelligence

- Digital Twins
- AI-enabled SOP Analysis
- Vision AI

## Automotive

- ADAS Computing
- Lidar
- IVI & eCockpit
- Body Controller
- Infotainment System
- EVSE
- EV ECU
- Powertrain
- E-Bike

## IoT & Smart appliances

- AR/VR
- Headset
- Game Console
- AIoT
- Exercise Equipment
- E-cigarette
- Smart Helmet
- Healthcare

## Communication devices

- Smartphone
- 5G O-RAN
- Network Switch
- Cable Modem
- Set-Top Box
- Access point, FWA




# 5G Solution Introduction – Product Portfolio

## Radio Unit

### Macro Cell

**2025Q4**



**PR2850**

- Option 7.2a, 4Carriers per 4T4R  
2 carriers per 8T8R
- n78/n79/n41
- Support BW: up to 100MHz
- AISG Port support
- Output Power: 40W/chain
- 40~55 °C, IP65

### Micro Cell



**PR2400**

- Option 7.2a, 4T4R
- n48/n78/n79
- Support BW: up to 100MHz
- Output Power: 5W/chain
- 40~55 °C, IP65

**2025Q3**



**PR2800**

- Option 7.2a, 4Carriers per 4T4R  
2 carriers per 8T8R
- n77
- Support BW: up to 100MHz
- Output Power: 10W/chain
- 40~55 °C, IP65


### Pico Cell



**PR1400**

- Option 7.2a, 4T4R
- n48/n78/n79/n77
- Support BW: up to 100MHz
- Output Power: 250mW/chain
- 0~40 °C, IP30

**2025Q1**



**PR1450**

- Option 7.2a, 4T4R
- n48/n78/n79/n77
- Support BW: up to 100MHz
- Output Power: 250mW/chain
- 2CC supported
- 5~50 °C, IP50

## Baseband Unit

2026

### Next Gen. BBU

**PG5300**

- 5G NR SA Sub-6G, 3GPP R15/R16/R17. TDD Mode.
- Max. Number of Supported Cells up to 12.
- Active Users 1024/cell above
- Built-in GNSS Timing Source, 1588PTPv2 & Sync.E
- Support Energy Saving, C3/C4
- 5~55 °C
- Pegatron RAN Operation System License (PROS)



**PG5200**

- 5G NR SA Sub-6G, 3GPP R15/16. TDD Mode.
- Max. Number of Supported Cells up to 3.
- Active Users up to 128/Cell, Single Cell only can up to 256 Active Users.
- Users/TTI up to 8UEs.
- Handover, Network Slices Supported.
- Built-in GNSS Timing Source, 1588PTPv2 & Sync.E
- 5~55 °C
- Pegatron RAN Operation System License (PROS)

## Integrated Small Cell

2025Q3



**PS2400**

- 5G NR SA Sub-6G, 3GPP R15/16.
- Option 2, TDD Mode
- n48/n78/n79/n77
- Support BW: up to 100MHz
- Output Power: 5W/chain
- Built-in GNSS Timing Source, 1588PTPv2
- 40~55 °C, IP65

2025Q2



**PS1400**

- 5G NR SA Sub-6G, 3GPP R15/16.
- Option 2, TDD Mode
- n48/n78/n79/n77
- Support BW: up to 100MHz
- Output Power: 250mW/chain
- Built-in GNSS Timing Source, 588PTPv2
- 0~45 °C, IP30

## Fronthaul/Backhaul



**CSR DM8218-F**

- 16 1/10/25G SFP+ ports, 2 100/400G QSFP28 ports
- Built-in Timing Source 1588v2 PTP & Sync. E (Optional)
- 0~50 °C



**CSR DM6214-B**

- 12 10/25G SFP+ ports, 2 25/100G QSFP28 ports
- Built-in Timing Source 1588v2 PTP & Sync. E
- 40~65 °C



**CSR DM2118-B**

- 4GE RJ45, 8 GE SFP ports, 2 10/25G SFP+ ports
- Built-in Timing Source 1588v2 PTP & Sync. E
- 40~65 °C



**CSR S9500-30XS**

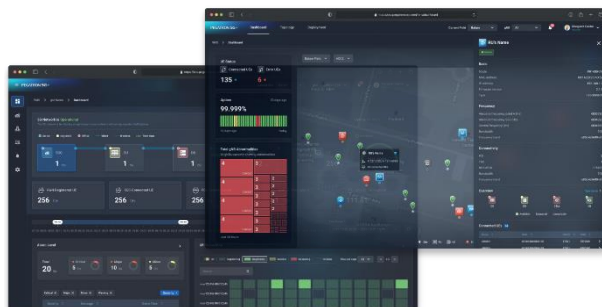
- 2 40/100G QSFP28 ports, 8 1/10/25G SFP28 ports
- 20 100M/1/10G SFP+ ports
- Built-in Timing Source, 1588v2PTP, Sync.E
- 40~65 °C



**FHM M3000-14XC**

- 8 1/10/25G Fronthaul Multiplexer to RRU
- 40~70 °C

## Operation Support System



### Network Management System (NMS)

- Key functionalities: Deployment, Administration, Topology

### Element Management System (EMS)

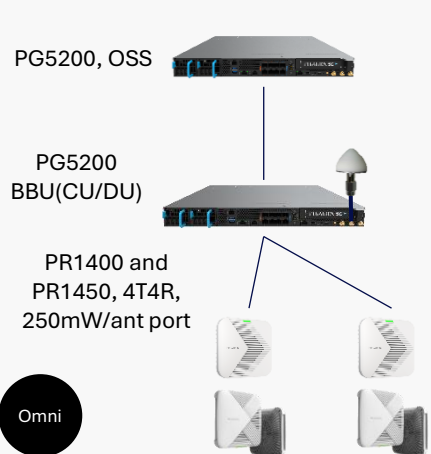
- FCAPS (Fault, Configuration, Account, Performance) management system
- Key functionalities: Dashboard, gNB Management, UE Management, Tools, Alarm Management, Setting Management.

- Launched with Country Cert.
- In developing (Lanuch@2025)
- Planning and Market Evaluation

# 5G Solution Introduction – P5G NR Radio Access Network System Solution

## Indoor solutions with OSS

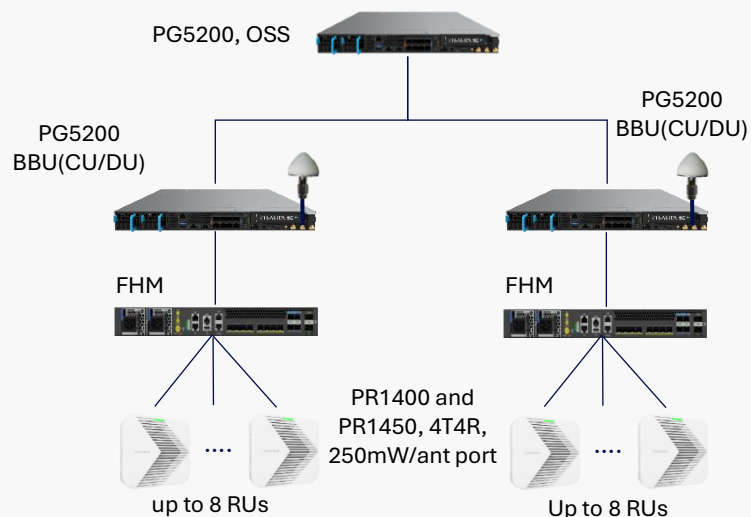
Dedicated OSS HW for southbound vRAN BBU and Indoor RRU



- Note:
1. An internal omni antenna transmit line of sight up to 40 meter at RSRP -100dBm
  2. L3 switch is subject to require, regarding of the number of networking products or the capacity of field deployment.

## Integrated Density/Extension Solutions

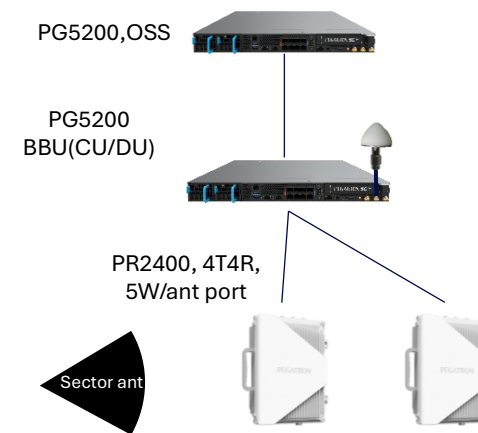
Dedicated OSS HW for southbound vRAN BBU and cell sharing integration



- Note:
1. L3 switch is subject to require, regarding of the number of networking products or the capacity of field deployment.

## Outdoor solutions with OSS

Dedicated OSS HW for southbound vRAN BBU and outdoor RRU



- Note:
1. Sector antenna with 12dBi gain and horizontal beam at 60° transmit line of sight 400 meter at RSRP -100dBm
  2. L3 switch is subject to require, regarding of the number of networking products or the capacity of field deployment.

# 5G Solution Introduction – User Equipment – 5G UE, 5G IOT, PON, Wi-Fi 7

- Available
- Sample
- Under development
- Under planning

## PON



### GPON HGU (FG36AX)

- Airoha EN7529DT
- Wi-Fi 6 (4+4)
- 4x1GbE
- 2xFXS



### XGS-PON SFU/HGU (FX100/FX130/FX175)

- Airoha AN7581ST / AN7581DT / AN7581PT
- 1x10GbE
- 1x10GbE+3x1GbE
- 1x10GbE+3x2.5GbE
- XGS-PON/GPON QOSA



### GPON HGU (FG72BE)

- Airoha AN7551PT
- Wi-Fi 7 (4+4)
- 4x1GbE + 1x2.5GbE
- 2xFXS



### GPON HGU (FG36BE)

- Airoha AN7553CT
- Wi-Fi 7 (2+2)
- 4x1GbE
- 2xFXS

## Wi-Fi 7



- ### EG180BE
- Wi-Fi 7 (2+4+4)
  - 2x2.5GbE



- ### EG65BE
- Wi-Fi 7 (2+4)
  - 1x2.5GbE+2x1GbE



- ### EX180BE
- Wi-Fi 7 (2+4+4)
  - 2x10GbE + 3x1GbE

## 5G FWA IDU



- ### MG54AX
- SDX62, 3GPP Rel. R16
  - 4G LTE, 5G NR (Sub-6G)
  - Wi-Fi 6 (2+4)
  - 1 GbE
  - JPN Telec Certified



- ### MG36AX/MG18AX
- MTK T750, 3GPP Rel. 15
  - 4G LTE, 5G NR (Sub-6G)
  - Wi-Fi 6 (4+4/2+2)
  - 2.5 GbE



- ### MG72BE
- MTK T830, 3GPP Rel. 16
  - 4G LTE, 5G NR (Sub-6G)
  - Wi-Fi 7 (4+4)
  - Dual 2.5 GbE



- ### MG50BE
- MTK T830, 3GPP Rel. 16
  - 4G LTE, 5G NR (Sub-6G)
  - Wi-Fi 7 (2+3)
  - 1\* 2.5 GbE + 3\* GbE

## 5G FWA ODU



- ### M2U300
- SDX65, 3GPP Rel. 16
  - 4G LTE, 5G NR (Sub-6G & mmW)
  - mmW SA, High Performance Antennas
  - Up to 10 GbE, PoE PD
  - Outdoor IP65



- ### M2U350
- SDX65, 3GPP Rel. 16
  - 5G NR (mmW)
  - mmW SA, High Performance Antennas
  - Up to 10 GbE, PoE PD
  - Outdoor IP65



## 5G IOT



- ### 5G 4K Camera
- SDX62, Sub-6G
  - 4K Video
  - Night Vision
  - JPN Telec Certified
  - IP65, -10 to 50° C



- ### MD100
- SDX62, 3GPP Rel. 16
  - eMBB
  - USB Power Passthrough
  - No Wi-Fi



- ### MD200
- SDX35, 3GPP Rel. 17
  - 5G RedCap
  - No Wi-Fi



- ### 5G 4K Camera Gen.2
- SDX35, 3GPP Rel. 17
  - 5G RedCap
  - 4K Video, Night Vision
  - IP66, -20 to 60° C
  - External antenna

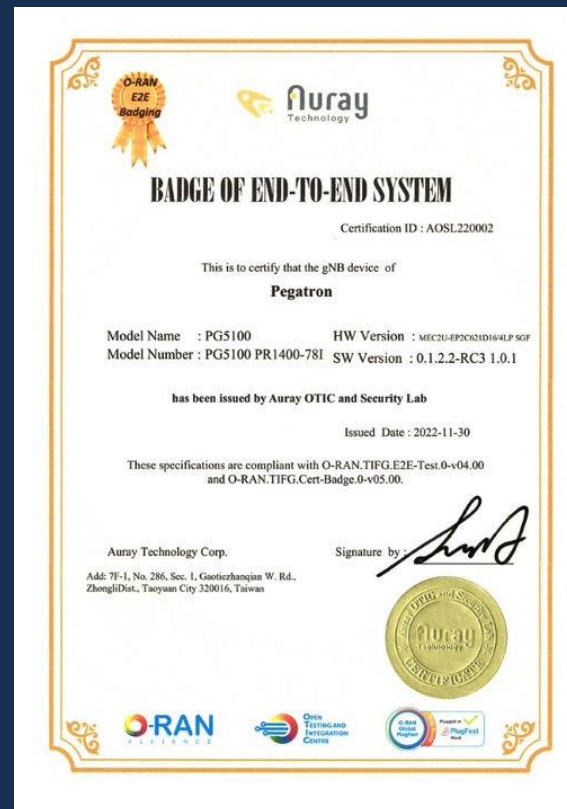
2023

2024

2025



# 5G Solution Introduction –Compliance and Awards



WW 1<sup>st</sup> ORAN E2E Badge



# 5G Private Network Worldwide Experience



Smart Manufacturing



Digital Resilience



Education & Healthcare



Utilities & Energy



Transportation & Maritime



Campus & Exhibition Center

# 5G Private Network Use Case : Smart Manufacturing

### Pegatron Taipei Factory



### Pegatron Vietnam Factory



### Pegatron Taoyuan Factory




### PEGAVISION Factory





Smart PCB Factory



Automation Equip Factory




Automated Logistics



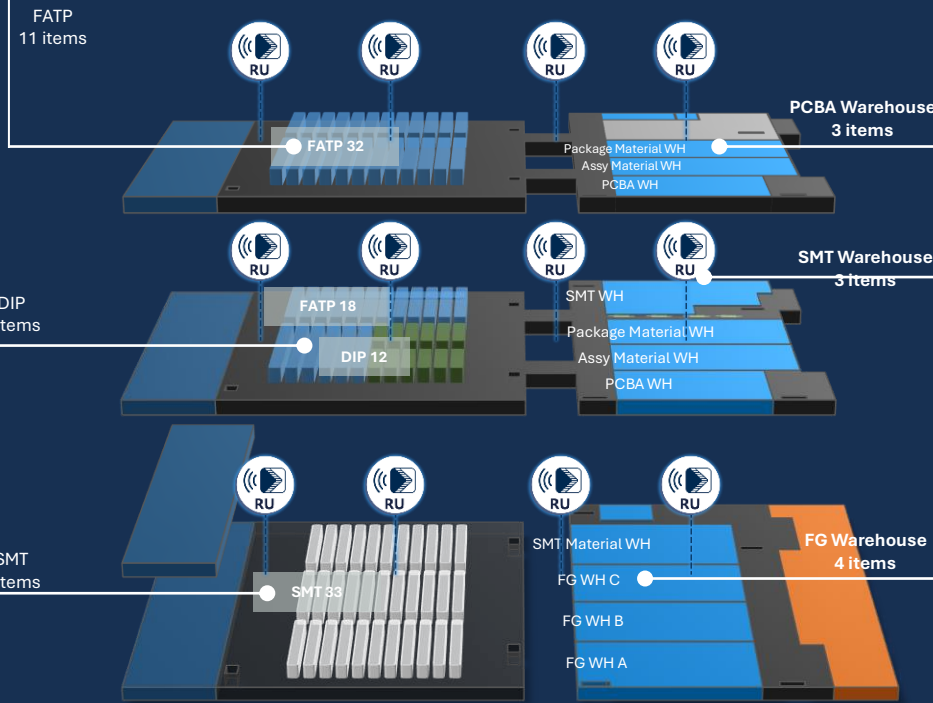

Meat Processing Plant

# 5G Smart Factory in Indonesia

Test 100%   Label Sticking   Auto Screw   Unit AOI   Box Folding   Box Cover   Unit Weight   Packing Accessory   Carton Label   PCBA AOI



- Carrier Recycle
- DIP AOI
- Auto Insertion
- Input
- Auto Carrier
- Auto Pick
- Part Connect
- Carrier Recycle
- Label Sticking



- Stack AGV
- Tray Recycle
- PCBA Shelf
- Material AMR
- Smart Material
- Smart Material
- Auto Weight
- AGV
- Auto Pack
- Pallet Stack

Devices Connection :

> 1000+

Signal Coverage :

>85,000 m<sup>2</sup>

# 5G Private Network Use Case: Defense/Industrial

## Digital Resilience

### Hsinchu Fire Department

5G + MEO (SES)

2022



### MODA Digital Resilience

5G + MEO (SES) / 5G +LEO (OneWeb)

20224

moda

數位發展部

Ministry of Digital Affairs



### Yang Ming Marine

5G + LEO (Starlink)

20224

**YANG MING**  
YANG MING MARINE TRANSPORT CORP.



# 5G Private Network Use Case

## Petrochemical Industry, Education, Campus & Exhibition Center



Petrochemical Industry



Interactive Theater



Energy Saving

Southern Taiwan Innovation & Research Park, MOEA



數位發展部  
Ministry of Digital Affairs



Rural VR Education



中華電信  
Chunghwa Telecom



Exhibition Center

# PEGATRON 5G

和碩聯合科技

Website



<https://5g.pegatroncorp.com>